

**CC** CHONG CHEONG  
FOUNDRY WORKS PTE LTD

*PIPES | FITTINGS | FLANGES*



## ABOUT US

We are a specialized supplier of pipe products to the marine, oil and gas, and industrial plants. Put us to work, and we'll get you a practical mix of quality and affordability.

How do we do it? We work hard to optimize our entire value chain, build long-term supplier relationships, and produce in large volumes.

Strengthened through years of experience in this demanding industry, you can trust our team to deliver a reliable service.

### Our Vision

*To be Singapore's best supplier of pipe products to the marine, oil and gas, and industrial plants.*

*Being the best means providing an excellent combination of service, price and quality to become the customer's preferred supplier.*



## WHY CHONG CHEONG?

We believe in getting the basics right, then go further to exceed your expectations at every level of interaction. We believe in creating value for you, and here's how we do it:

### 💰 Competitive Pricing

At CC, we strive hard to provide customers the best offer every time. Optimizing the supply chain, building strategic partnerships with reputable factories and keeping our company structure lean are some of the many things we do to make sure every of your dollar count.

### 👤 Commitment to Service

When you speak, we listen. We learnt that you like fast response to enquiries, prompt deliveries, and good documentation. Customer feedback is one of the key drivers of our business. With each feedback, we will improve to serve you better.

### ✅ Quality Assurance

We make sure the dimensions of pipe and fitting that we supply have passed our QC team's examination. Third party inspection by classification societies will also be performed upon request.

### 📦 Ready Stock

To meet your varied piping product needs, our stock planner employs forecasting techniques to manage over a thousand SKUs, stored in large capacity warehouses, ensuring a robust and expedient supply.

### 🏭 Reliable Factory Production

Our import specialist will work closely with our factory, freight partners and quality control personnel to ensure prompt delivery.

### 🚚 Fast Local Production

Our local team of experienced engineers will produce the required custom products according to your drawing and given tolerance.

# PRODUCT RANGE



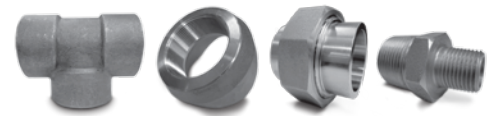
| PIPES    |   |                      |
|----------|---|----------------------|
| TYPE     | MATERIAL  | PRESSURE             |
| Seamless | A106 Gr.B   | STD, XS, XXS, S20    |
| Welded   | API 5L Gr.B<br>A333-6<br>A312-TP304L<br>A312-TP316L | S40, S80, S120, S160 |



| BUTTWELD FITTINGS  |             |                      |
|--------------------|-------------|----------------------|
| TYPE               | MATERIAL    | PRESSURE             |
| 90 Deg L/R Elbow   | A234-WPB    | STD, XS, XXS, S20    |
| 90 Deg S/R Elbow   | A420-WPL6   | S40, S80, S120, S160 |
| 45 Deg L/R Elbow   | A403-WP304L |                      |
| 45 Deg S/R Elbow   | A403-WP316L |                      |
| Concentric Reducer |             |                      |
| Eccentric Reducer  |             |                      |
| Equal Tee          |             |                      |
| Reducing Tee       |             |                      |
| Cap                |             |                      |



| FLANGES     |            |                                      |
|-------------|------------|--------------------------------------|
| TYPE        | MATERIAL   | PRESSURE                             |
| SOFF (PLFF) | SS400      | <b>JIS Standard</b>                  |
| SORF        | ST37.2     | 5K, 10K, 16K, 20K, 40K               |
| BLFF        | A105N      | <b>DIN Standard</b>                  |
| BLRF        | A350 LF2   | PN6, PN10, PN16, PN25, PN40          |
| WNRF        | A182-F304L |                                      |
| WNRTJ       | A182-F316L |                                      |
| THRF        |            | <b>ANSI Standard</b>                 |
| SWRF        |            | 150#, 300#, 600#, 900#, 1500#, 2500# |
| LJFF        |            |                                      |



| HIGH PRESSURE FITTINGS |            |              |
|------------------------|------------|--------------|
| TYPE                   | MATERIAL   | PRESSURE     |
| Elbow                  | A105N      | 3000#, 6000# |
| Tee                    | A350 LF2   |              |
| Coupling               | A182-F304L |              |
| Union                  | A182-F316L |              |
| Bushing                |            |              |
| Nipple                 |            |              |
| Weldolet               |            |              |
| Threadolet             |            |              |



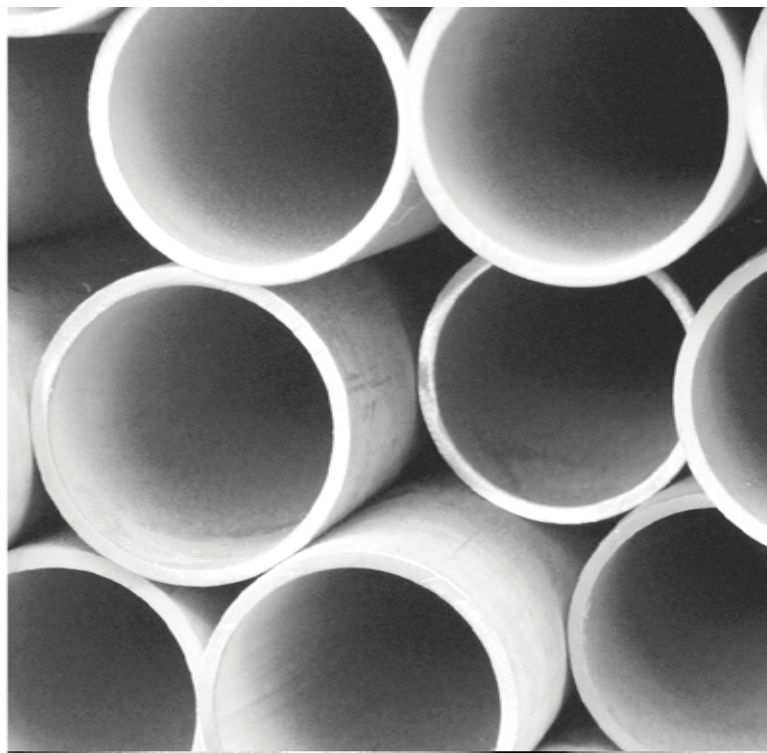
| LOW PRESSURE FITTINGS |               |          |
|-----------------------|---------------|----------|
| TYPE                  | MATERIAL      | PRESSURE |
| Elbow                 | CF8 (304)     | 150#     |
| Tee                   | CF8M (316)    |          |
| Coupling              | Cast Iron     |          |
| Union                 | HDG Cast Iron |          |
| Bushing               | Cast Steel    |          |
| Nipple                |               |          |



| VALVES      |                      |                                      |
|-------------|----------------------|--------------------------------------|
| TYPE        | MATERIAL             | PRESSURE                             |
| Gate        | As per specification | <b>JIS Standard</b>                  |
| Globe       |                      | 5K, 10K, 16K, 20K                    |
| Ball        |                      | <b>DIN Standard</b>                  |
| Butterfly   |                      | PN6, PN10, PN16, PN25, PN40          |
| Swing Check |                      |                                      |
| Diaphragm   |                      | <b>ANSI Standard</b>                 |
| Plus        |                      | 150#, 300#, 600#, 900#, 1500#, 2500# |
| Relief      |                      |                                      |
| Safety      |                      |                                      |



| CUSTOM FABRICATION |                                   |                                   |
|--------------------|-----------------------------------|-----------------------------------|
| TYPE               | MATERIAL                          | PRESSURE                          |
| Spectacle Flange   | As per drawing and specifications | As per drawing and specifications |
| Deck Scupper       |                                   |                                   |
| Stud Flange        |                                   |                                   |
| Tee Block          |                                   |                                   |
| Pipe Sleeve        |                                   |                                   |



**CC** CHONG CHEONG  
FOUNDRY WORKS PTE LTD

## Contact Us

Please feel free to contact us via e-mail or phone. We will be glad to answer your questions, concerns and/or feedback.

**Address:**

6 Sixth Lok Yang Road  
Jurong Industrial Estate  
Singapore 628104

**Tel:** +65 6861 0770 / +65 6266 1836  
**Fax:** +65 6861 0845 / +65 6261 5638

**Email:** [sales@chongcheong.com.sg](mailto:sales@chongcheong.com.sg)

**Web:** [www.chongcheong.com.sg](http://www.chongcheong.com.sg)