

DPAF961 - Flow DPAF961 - Return



Differential Pressure Control Valves

PN16

To meet the growing use of variable speed pumps for HVAC applications, Crane Fluid Systems has launched a range of Differential Pressure Control Valves (DPCV) specifically aimed at optimising system performance. Extremely efficient, the DPCV is set to a maximum differential pressure which ensures flow cannot exceed a desired rate. It therefore helps reduce energy consumption, the risk of noise and simplifies the commissioning process.

Materials

ITEM	DESCRIPTION	MATERIAL
1	Body	Bronze BS EN 1982 (CC491K)
2	Bonnet	Bronze BS EN 1982 (CC491K)
3	Chamber	Bronze BS EN 1982 (CC491K)
4	Adjuster	Nylon Grade PA6
INT	Stem / Piston	Stainless Steel BS EN 10088 - 1: 2005
INT	Diaphragm	Rubber EPDM
INT	O-Ring Seals	Rubber EPDM

See diagrams for item numbers
INT denotes an internal component not visible on these drawings



DPAF961

Female Ended DPCV

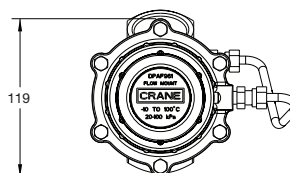
BALANCING VALVES

Dimensions & Weights

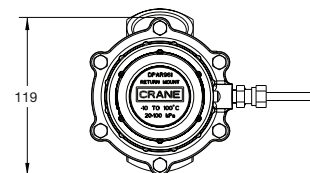
SIZE	A (mm)	B (mm)	END CONNECTION BS EN 10226	WEIGHT (kg)	FLOW (Fully Open Kv)
DN15	87	175	Rp 1/2" Parallel	2.32	2.32
DN20	96	175	Rp 3/4" Parallel	2.36	3.2
DN25	100	185	Rc 1" Taper	2.53	6.45
DN32	114	190	Rc 1 1/4" Taper	2.73	10.9
DN40	125	195	Rc 1 1/2" Taper	3.01	16.7
DN50	146	205	Rc 2" Taper	3.46	26

DN15 & DN20 End Connections: BS EN 10226 Rp Parallel
DN25 to DN50 End Connections: BS EN 10226 Rc Taper

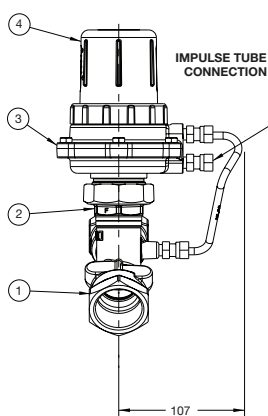
Dimensional Drawings



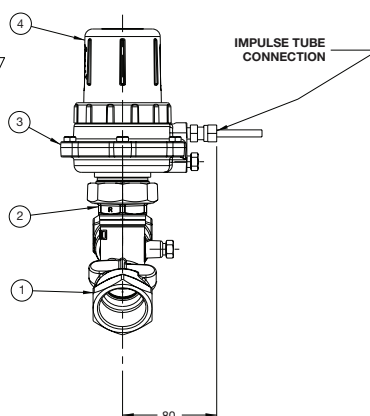
Flow Configuration



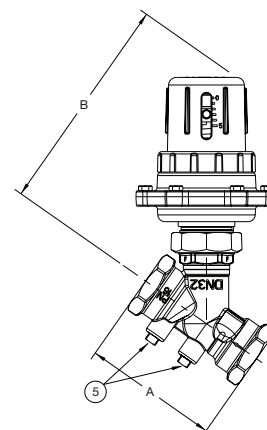
Return Configuration



Flow Configuration
End View



Return Configuration
End View



Flow & Return Configuration
Front View

Valid as of 160418

Every effort has been made to ensure that the information contained in this publication is accurate at the time of publishing. Crane Ltd assumes no responsibility or liability for typographical errors or omissions or for any misinterpretation of the information within the publication and reserves the right to change without notice.

DPF931

Companion Valve



PN16

To meet the growing use of variable speed pumps for HVAC applications, Crane Fluid Systems has launched a range of Differential Pressure Control Valves (DPCV) specifically aimed at optimising system performance.

Extremely efficient, the DPCV is set to a maximum differential pressure which ensures flow cannot exceed a desired rate. It therefore helps reduce energy consumption, the risk of noise and simplifies the commissioning process.



DPF931

Materials

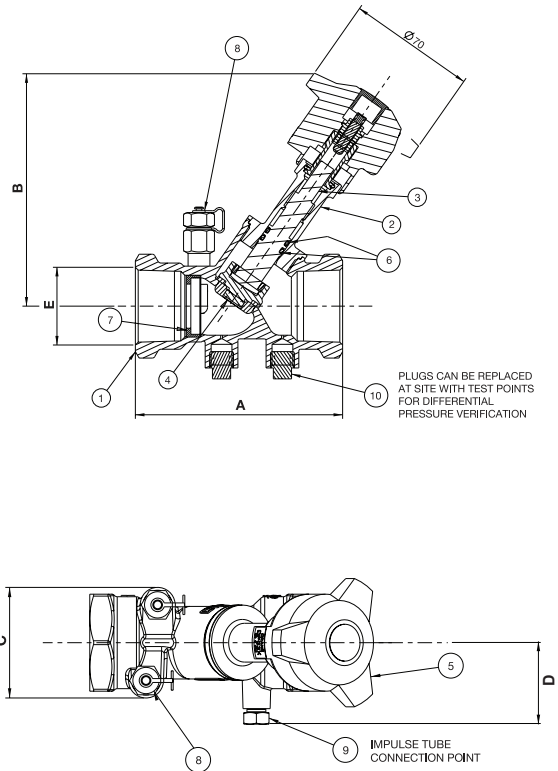
ITEM	DESCRIPTION	MATERIAL
1	Body	Bronze BSEN1982 (CC491K)
2	Bonnet DN15 to DN32 Bonnet DN40 to DN50	DZR Brass BSEN12164 (CW602N) Bronze BSEN1982 (CC491K)
3	Stem	DZR Brass BSEN12164 (CW602N)
4	Disc (DN25 Only) Disc (DN32 to DN50)	DZR Brass BSEN12164 (CW602N) DZR Brass BSEN12165 (CW602N)
5	Handwheel	Plastic
6	O-Ring Seal	EPDM Rubber WRAS approved
7	Orifice Insert	DZR Brass BSEN12164 (CW602N)
8	Test Point	DZR Brass BSEN12164 (CW602N)
9	Plug Rc 1/8" Taper	DZR Brass BSEN12164 (CW602N)
10	Plug Rp 1/4" Parallel	DZR Brass BSEN12164 (CW602N)

Dimensions & Weights

FIG NO.	NOM. SIZE	A (mm)	B (mm)	C (mm)	D (mm)	END CONNECTION EN10226	FULLY OPEN		KV _s	WEIGHT (kg)
							FLOW (Kv)	HEAD LOSS (K)		
D931	DN15	87	105	50	34	Rp 1/2" Parallel	1.87	30.27	2.2	0.61
	DN20	96	106	54	36	Rp 3/4" Parallel	3.14	34.55	4.7	0.65
	DN25	100	127	62	39	Rc 1" Taper	5.59	27.85	8.6	0.95
	DN32	114	128	66	43	Rc 1-1/4" Taper	10.80	22.60	16.6	1.13
	DN40	125	143	70	46	Rc 1-1/2" Taper	18.10	14.76	24.5	1.52
	DN50	146	144	78	48	Rc 2" Taper	29.10	14.62	46.1	1.98
D933	DN15	87	105	50	34	Rp 1/2" Parallel	1.06	94.20	1.1	0.61
D934	DN15	87	105	50	34	Rp 1/2" Parallel	0.57	325.8	0.58	0.61

DN15 & DN20 End Connections: EN10226 Rp Parallel
 DN25 to DN50 End Connections: EN10226 Rc Taper

Dimensional Drawings



DP971F

DN65 – DN150

ProBalance

PN16

Features & Benefits

- A high performing differential pressure control valve that can be fitted in the supply or return pipework, regulating both differential pressure and flow rate.
- Differential pressure activation range (DP Range) from 15 to 150 kPa
- Integrated valve position indicator for visual inspection
- Tested in accordance with the BSRIA guidance standard

Materials

PART	MATERIAL
Body	Cast Iron ASTM A48-CL30
Seat	Cast Bronze ASTM B584-C836
Cone	Cast Bronze ASTM B584-C836
Guide	Cast Bronze ASTM B584-C836
Gasket	Non Asbestos
Top Flange	Cast Iron ASTM A48-CL30
Packing	EPDM
Yoke	Ductile Iron ASTM A536-65-45-12
Diaphragm plate	ASTM A240-304
Spring	Spring Steel
Adjust Screw	B16-C36000 (Brass)
Actuator Spindle	Stainless Steel 304
Diaphragm Case	DI (A536-65-45-12)
Diaphragm	EPDM
Cone Stem	Stainless Steel 316
Cover Bolt	Steel to JIS3101

Dimensions, Coefficients & Weights

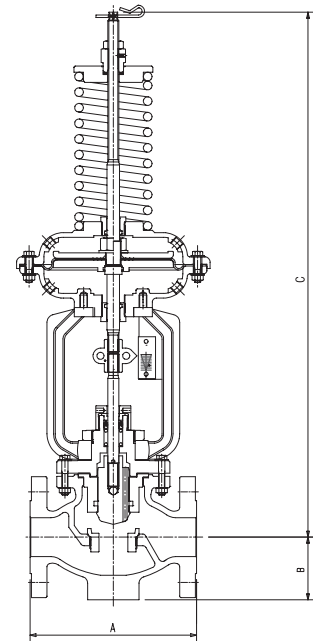
SIZE (mm)	WEIGHT (kg)	A (mm)	B (mm)	C (mm)	F/O Kv
65	48	276	115	720	55.4
80	56	298	120	720	72.7
100	72	352	130	735	129.8
125	130	400	150	775	173
150	162	451	180	800	249.1



DP971F

BALANCING VALVES

Dimensional Drawing



Pressure/Temperature Ratings

TEMPERATURE (°C)	-10 to 120°C
PRESSURE (BAR)	16

PRESSURE RATING: PN16

END CONNECTIONS: BS EN1092-2 PN16

OPERATOR: Actuator

INCLUDED WITH VALVE: 1 x Impulse tube kit (which contains two sets of; Copper tube, ball valve, tee piece, flare nut, flare nipple, nipple, long nipple and pressure gauge)

SPECIFICATION: - Valve shell tested and inspected in accordance with BS EN 12266-1
- Face-to-face in accordance with EN 58 Series 1 or 37

OTHER: Valve comes factory set at 70 kPa

SIZING: Please contact our technical support helpline for guidance

SPARES: Impulse tube kit (Part No. 0JG91983D)

Valid as of 230418

Every effort has been made to ensure that the information contained in this publication is accurate at the time of publishing. Crane Ltd assumes no responsibility or liability for typographical errors or omissions or for any misinterpretation of the information within the publication and reserves the right to change without notice.